

ASSBI Newsletter

Australasian Society for the Study of Brain Impairment
September 2016

Issue 56

Working together to improve the lives of people with brain impairment



ASSBI COMMITTEES

EXECUTIVE

PRESIDENT: A/Prof Tamara Ownsworth

PRESIDENT ELECT: Prof Jacinta Douglas

PAST PRESIDENT: Prof David Shum

SECRETARY: Prof Jennie Ponsford

TREASURER: Prof Skye McDonald

PROFESSIONAL DEVELOPMENT OFFICER

Ms Miriam Poole

STUDENT LIAISON OFFICER

Dr Dana Wong

NATIONAL:

Ms Jessica Barnes

A/Prof David Copland

Ms Nicci Grace

Dr Michelle Kelly

Dr Michael Perdices

Dr Clare Ramsden

Prof Leanne Togher

Dr Janet Wagland

EXECUTIVE OFFICER:

Ms Margaret Eagers-Rickit

PUBLICATIONS

Dr Jan Ewing – Chair

Dr Olivier Piguet

A/Prof Jennifer Fleming – Co-Editor

A/Prof Grahame Simpson – Co-Editor

Dr Petrea Cornwell – Assistant Editor

SOCIAL MEDIA & STUDENTS

Dr Elizabeth Beadle – Social Media

Ms Anna Carmichael – Student Co-ordinator

WORDS FROM OUR PRESIDENT



As always it has been a busy few months for ASSBI with plans being finalised for our upcoming annual conference, hosting student networking and professional development events and celebrating the

40th anniversary of our corporate partners Shine Lawyers.

The program for the 39th Annual Brain Impairment Conference (Sept 26th-28th) has been finalised and I would like to thank our Chair Professor David Shum for putting together an exciting program and workshop series. If you are planning to join us in Macau please register for the conference and workshops and book your accommodation at the Sheraton Macau Hotel through the ASSBI website as soon as possible.

Professors Skye McDonald and Jacinta Douglas conducted a very successful workshop on communication and social cognition in London in July (see review p. 4-5). Following their workshop Dr Nicholas Behn moderated a #ASSBIchat session on communication. Continuing the social theme, we have an upcoming #ASSBIchat on social media and brain injury which will be moderated by Melissa Brunner in October.

On August 4th I had the pleasure of attending the 40th anniversary celebration of Shine Lawyers, hearing about the achievements of the firm and meeting Erin Brockovich (see p. 2). Erin then travelled onto Sydney for a special evening hosted by Shine Lawyers and ASSBI (August 8th). A big thanks and congratulations to Eloise Scanlan and Jamie Shine for these memorable evenings.

This month we said farewell to our Social Media Officer Rachael Rietdijk and welcomed Dr Lizzie Beadle into the role. Rachael, thank you for helping us to establish #ASSBIchat and increasing ASSBI's online profile. Along with our wonderful

student teams, social media forums really help to make ASSBI a vibrant society.

Please read about upcoming ASSBI professional development opportunities, research involvement, new resources and Students Corner.

I look forward to seeing you in Macau!

Warmest wishes,
Tamara Ownsworth, President

EXECUTIVE OFFICER'S REPORT



I'd like to personally thank Rachael Rietdijk for all her help with the ASSBI Social Media sites, her expertise was invaluable. Dr Lizzie Beadle took over this role on 1st

August. Welcome to ASSBI Lizzie!

I'd like to thank Dr Nick Behn who put in the hard yards on the ground organising Jacinta and Skye's workshop in London.

I had a wonderful time at the Evening with Erin Brockovich hosted by Shine Lawyers in Sydney, what an inspirational lady.

Don't forget to check out our [Calendar](#) on the website which shows ALL our Webinars, Workshops and Conference Dates as well as Training, Meetings and Conferences from other organisations for 2016 and into 2017. If you want to put an event on the Calendar please [email me](#) details.

If you haven't renewed your membership you can now – all memberships are valid for a full 12 months and you will get a substantial discount to the conferences in Macau and Melbourne. Cheers, Margaret Eagers-Rickit, EO

SOCIAL MEDIA



Like us on [Facebook](#),

[Follow ASSBI](#) on Twitter

Join [Psychwire](#) and follow ASSBI.

Become a contact on LinkedIn

Dr Lizzie Beadle has taken over from Rachael as our media officer. Lizzie is organising a new #ASSBIchat

This page – Committees, Words from our President, EO's Report, Social Media

Page 2 – News, Website, Shine Lawyers

Pages 3 & 4 – PD

Page 5 – Journal, Resources PsychBITE, Students Corner

Page 6 – Calendar of Events

Proudly supported by



ANYTHING interesting that should be tweeted contact Lizzie on socialmedia@assbi.com.au

NEWS

ARTICLE IN PRESS – Disability and Rehabilitation

Knox, L., Douglas, J.M. & Bigby, C.

“I’ve never been a yes person”: Decision-making participation and self-conceptualisation after severe traumatic brain injury

<http://dx.doi.org/10.1080/09638288.2016.1219925>

What the study is about

Severe traumatic brain injury (TBI) is associated with significant changes in an individual’s physical, cognitive, emotional and social functioning. The impact of TBI can alter the course of a person’s life and shape their sense of who they are. As part of a larger research project that aimed to develop an understanding of the process of decision making after severe TBI, this study explored how participation in decision making contributes to the process of self-conceptualisation.

What we did

We used constructivist grounded theory methods. Data included 20 in-depth interviews with eight adults with TBI. Data generation took place from 2012 to 2014, with each participant taking part in either two or three interviews over a 12-month period. All participants were in the chronic phase (7-29 years) following severe TBI, and presented with moderate-severe levels of disability. Data analysis involved open and focussed coding through a process of constant comparison until clear categories emerged.

What we found

The central finding that emerged reflected the importance of *re-establishing autonomy* after TBI. Within this finding, two main categories emerged. The first reflected the dynamic relationship between the process of self-conceptualisation and experiences of participating in making decisions for adults with TBI. Making decisions provided a means for participants with TBI to set and act upon goals that were important to them after TBI. Participants described that decision-making experiences either reinforced their self-concept or forced them to revise their sense of self.

The second category captured the crucial role of social support in facilitating decision-making participation. Support

came from a variety of sources but was most frequently provided by family members. Participants valued supporters who had an understanding of who they are and were committed to an ongoing relationship with them. Four distinct methods of support provision were evident, which included: (1) creating decision-making opportunities, (2) providing expert advice, (3) acting on my behalf, and (4) motivating and providing encouragement. The nature of the support provided to the person with TBI shaped how actively involved in the decision-making process they were.

Three participant exemplars are presented in the article to illustrate how support and decision-making experiences play a role in shaping a person’s goals for the future.

What it means

The findings of this study suggest several implications, both for clinical practice and for the provision of training and education for those taking on the role of decision-making supporter. For clinicians working in brain injury rehabilitation, the findings highlight the importance of intervention that is based on a detailed knowledge of the person (and their self-concept), that aims to maximise autonomy, and that prioritises the development and maintenance of the person’s social support network.



ASSBI would like to congratulate Professor Leanne Togher, a past President and ASSBI Fellow, who has been voted in as new Associate Dean Research in the Faculty of

Health Sciences at Sydney University. Very proud!

WEBSITE

The ASSBI website is a very important tool for distributing information with links to our Social Media. Please let me have your feedback at admin@assbi.com.au.

Margaret Eagers, E

 **SHINE LAWYERS**
CORPORATE PARTNERS



News from our Corporate Partners An evening (or two!) with Erin Brockovich

On Monday, 8 August ASSBI joined its Corporate Partners in hosting a special evening with Shine Lawyers’ Ambassador, Erin Brockovich. ASSBI’s Professor Skye McDonald and Shine’s NSW General Manager James Chrara both presented on the night, discussing their partnership and the important work undertaken by both parties to improve the lives of people with brain impairment.



This was followed by a wonderful talk by special guest of honour Erin Brockovich, who discussed her journey as an advocate for human rights and a champion of the truth. Erin is currently using her voice to raise awareness and shine a light on water contamination issues impacting residents in the rural Queensland town of Oakey, and across Australia. To read more about this issue, click [here](#).

The evening was attended by prominent members of Shine Lawyers and the ASSBI Committee, ASSBI members as well as friends of ASSBI from NDARC, NCPIC, Drake Medox and the Sydney Children’s Hospital. If you would like to see more photos from the night, please [click on this link](#).

The week prior, ASSBI President Tamara Ownsworth and ASSBI Social Media Manager Lizzie Beadle joined Shine Lawyers and Erin Brockovich in Brisbane to celebrate the firm’s 40th Anniversary.

Shine Lawyers will join with ASSBI in hosting workshops on Capacity Assessment and Guardianship in Melbourne on 14th, Sydney on 21st and Perth on 28th October. To register for any of these workshops or for more information, please visit: <http://www.assbi.com.au/workshops.html>



PROFESSIONAL DEVELOPMENT

The full webinar programme is up on the ASSBI Website AND on our new [CALENDAR](#) – go to the [Professional Development Page](#) of the ASSBI website to find out about all our upcoming events.

If you would like to see someone give a workshop in your State or know of anyone coming to Australia in 2016 or 2017 who would like to give a workshop or webinar for ASSBI members, please email admin@assbi.com.au and we will endeavour to organise a full/half day workshop or a one hour webinar.

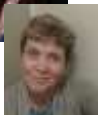
2016 Workshop Series #assbiworkshops



14 October - Capacity Assessment and Guardianship: Liz Mullaly and Paula Shelton (Shine Lawyers). Half-day in Melbourne
[INFORMATION](#)



21 October: Capacity Assessment and Guardianship: Sharon Flanagan and Caryn Ger (Shine Lawyers). Half-day in Sydney.
[INFORMATION](#)



28 October: Capacity Assessment and Guardianship: Robyn Lieblich and David Bayly (Bradley Bayly's Lawyers). Half-day in Perth.
[INFORMATION](#)



14 November: A clinician's guide to trauma and the brain: Jan Ewing. Full day in Melbourne
[INFORMATION](#)

2016 Webinar Series #assbiwebinars

The 2016 Webinar series is ready for you to register. [Click here](#) for information on the webinars and speakers. Webinars go for 1 hour from 12.30pm – 1.30pm Sydney/Melbourne time. [REGISTER NOW](#)



11th October – Suicide prevention in acquired brain injury by A/Prof Grahame Simpson



13th December Neuroimaging in the dementias: what's the catch by Prof Olivier Piguet



AVAILABLE ON DEMAND
Managing challenging behaviours in community settings by Ms Sue Sloan



Long-term Outcome Following Traumatic Brain Injury (TBI): Three-factor Cognitive Reserve Structure by Prof Eli Vakil.



Aboriginal Australians' experiences of brain injury and ways to move forward in providing culturally secure rehabilitation services by Prof Beth Armstrong



Addiction and the brain: what do we know? By Dr Valentina Lorenzetti

CONFERENCES

39th Conference - #assbi2016



The 39th Annual Brain Impairment Conference will be held at the Sheraton Grand Hotel in Cotai Central in beautiful and historic Macau on Monday 26 to Wednesday 28 September 2016 and convened by Prof David Shum.

[INFORMATION](#)
[REGISTER NOW](#)

Macau is a wonderful place which showcases both Chinese and Portuguese culture; see a 3 minute video on Macau on [ASSBI's YouTube Channel](#)
We have a great accommodation deal with the Sheraton Grand Macau Hotel; [Book Now](#) and SAVE
[Check out the bios of the Keynote Speakers](#)

WORKSHOP 1

Prof McKay Moore Sohlberg



McKay is currently the Director of the Communication Disorders and Sciences Programme, USA. She is known internationally for her pioneering work in the field

of cognitive rehabilitation. McKay is a Fellow of the American Speech-Language-Hearing Association (ASHA). Prof Sohlberg will present Workshop 3 entitled: **Implementation Factors that Enhance Training of Procedural Tasks** Clinicians working with individuals who have acquired cognitive impairments are charged with training individuals who have compromised learning to accomplish procedural tasks such as the use of cognitive and communication strategies and assistive technology, activities of daily living and motor sequences. In spite of the centrality of instruction to rehabilitation, studies suggest that clinicians do not routinely use instructional techniques that optimize procedural learning in their patients with significant memory impairments. The purpose of this workshop will be to review the evidence supporting systematic instructional techniques for people with acquired cognitive impairments and describe the primary techniques. The workshop will focus on providing a framework and explicit demonstration of key instructional techniques. Specific course objectives include:

1. review of the rationale and evidence-base for using systematic instruction to train procedures
2. components of a needs assessment to identify training targets and intervention variables
3. model of training techniques to improve initial acquisition and mastery of skills
4. multilevel evaluation to provide data that will direct intervention and assess outcomes

WORKSHOP 2

Prof Jacinta Douglas



Jacinta is Professor of Acquired Brain Injury and holds the Summer Foundation Research Chair in the Living with Disability Centre at La Trobe University in

Melbourne. Jacinta is qualified in the

disciplines of speech pathology, clinical psychology and neuropsychology and is a Fellow of ASSBI

Professor Douglas will present workshop 2 entitled: ***Measuring and coping with cognitive-communication problems following brain injury***

Cognitive-communication problems are a well-established and enduring consequence of brain injury. As many as 70% of people with TBI and those close to them describe everyday interactions as a long-term challenge frequently associated with ongoing stress. Further, impaired communication skills and the strategies used to cope with communication breakdown have been found to correlate significantly and substantially with poor quality of life, lack of employment, poor social integration and reduced emotional wellbeing.

This workshop will focus on 2 aspects of the management of communication deficits following TBI:

1. Efficient and sensitive measurement of *perceived* communication deficits and communication-specific coping: Assessments that measure perceived communication enable evaluation of deficits from multiple perspectives as well as evaluation self-awareness. The La Trobe Communication Questionnaire (LCQ) and the Communication-specific Coping Scale (CommSpeCS) will be reviewed and clinical data from these assessments will be used to illustrate their contribution to treatment planning.
2. Effective and efficient intervention: Communication-specific Coping Intervention is a new treatment developed to target coping in the context of communication breakdown. The intervention incorporates the procedures and principles of cognitive behavioural therapy, self-coaching and context-sensitive social communication therapy. The intervention will be reviewed and demonstrated with case examples

WORKSHOP 3

Prof Sheena Reilly



Sheena is currently Director of the Menzies Health Institute, Queensland. She is a Fellow of the Australian Academy of Health and Medical Sciences, the

Australian Academy of Social Sciences, the UK Royal College of Speech and Language Therapists and of Speech Pathology Australia. Prof Reilly will present Workshop 1 entitled: ***Predicting developmental language impairment: findings from population data***

This workshop will examine and compare data from a number of clinical and population studies and will focus on why population studies are critical and how they enhance our understanding of the social, environmental and biological factors that underpin developmental language impairments. The workshop will also address the costs and burden of language impairments and the impact on Quality of Life.

1. Understand the biological and environmental factors underpinning developmental language impairment
2. The role population studies have played in understanding language impairment
3. The costs and burdens associated with language impairment
4. The impact of language impairment on educational attainment and quality of life
5. Summarise the evidence based interventions for children with Language Impairment

WORKSHOP 4

Prof Skye McDonald



Skye worked as a clinician with people with acquired brain disorders for 10 years before taking up her academic post at UNSW.

Skye leads a national Centre of Research Excellence “Moving

Ahead” to address psychosocial rehabilitation after traumatic brain injury.

Skye is also a Fellow of ASSBI.

Professor McDonald will present Workshop 4 entitled: ***Treating Social Cognition***

Social cognition refers to the ability to process social cues in order to understand and anticipate the behaviour of others. Disorders of social cognition are common following acquired brain injury (ABI); the three main types of problems are (1) recognising emotions in others (2) understanding the thoughts, beliefs and intentions of others, i.e. Theory of Mind ability and (3) having empathy. These difficulties not only make it difficult to read other people but deprive the person with

ABI of important feedback to guide their own behaviour.

In this workshop I will describe the main features of these kinds of difficulties as they are seen in people with ABI and current assessment tools. I will describe some bottom up and top down approaches that we have taken to remediate these difficulties focusing upon our emotion perception training program. I will also describe how this program can be integrated into a more comprehensive training social skills program. Finally, I will discuss some of the preliminary work that has focused upon addressing impairments in Theory of Mind.

Workshops 2 and 4 (Jacinta and Skye) were also presented in London in July. Below is a report from one of the 82 attendees:

It is always nice to have a good workshop to look forward to, the anticipation of some time out from a busy work schedule to think and discuss clinical theory and approaches, to get a chance to examine just what we are doing and why. The ASSBI workshop by Professors Jacinta Douglas and Skye McDonald was one such workshop and it didn't disappoint.

The two speakers provided an opportunity to review theory on both cognitive communication problems and social cognition after brain injury, before branching into clinical approaches within each domain. The relaxed, interactive presentation style allowed for questions and discussion throughout the talks which helped guide the content in a meaningful direction for the audience. Using video case studies also provided attendees with the opportunity of seeing approaches being used in reality, which always adds a depth of understanding for the audience member.

A real bonus was receiving copies of the Communication Specific Coping Scale (CommSpeCS), La Trobe Communication Questionnaire and Cognitive Communication checklist with an introduction to the forthcoming TASIT-S (short version). Seeing case study examples of them in use, with discussion on the benefits and challenges of using such questionnaires really helped bring reality to their application. The Communication-specific Coping Intervention from Jacinta, outlining the approach of using an individual's available skills and shaping them to reach more productive behaviour within an interaction, was enlightening and motivating to hear as a clinician; it really felt

like it was an approach that could be picked up and used immediately within clinical settings.

All this in a great venue which encouraged the cultivation of relaxed networking over meals and drinks (in addition to lovely food!). There was also a wide range of ASSBI resources to peruse during breaks including the Montreal protocol of the evaluation of Communication (MEC).

The one-day workshop worked well for costings, and I suspect more people got agreement to attend because it was good value for money and not a massive time commitment away from clinical time. So often, workshops and training courses concentrate heavily on theory and assessment but this workshop really opened up discussion on therapy approaches, which in reality is what we are here for.

Sinead Corkery
Speech and Language Therapist
York House, Brain Injury Rehabilitation Trust

40th Conference - #assbi2017



The 40th Annual Brain Impairment Conference will be held at the Grand Hyatt in Melbourne, Victoria on 1-3 June 2017 and is being convened by Dr Dana Wong, the theme of the conference is *Looking back to look ahead: 40 years of science, practice and education in brain impairment*. The call for abstracts will go out on 1st October 2016.

ASSBI'S JOURNAL BRAIN IMPAIRMENT is ASSBI's multidisciplinary Journal

The forthcoming issue of Brain Impairment (Issue 2, 2016) will be a themed issue on Stroke. Five of the seven papers address the topic from very different perspectives including a population-based study of neuropsychological recovery in the first year post ischemic stroke; a scoping review identifying the research conducted into prospective memory after stroke; an examination of the feasibility, reliability and validity of accelerometers after stroke; A Nigerian study into falls after stroke; and a

new scale measuring desire to void among stroke inpatients. The issue is finished off with a treatment trial of cognitive retraining in early Alzheimers and a qualitative study examining the interaction between health professionals and the spousal caregivers of people with Parkinson's disease. The studies come from a wide range of countries; New Zealand, Australia, Japan, Italy and Nigeria.

We are also looking forward that the next special issue of Brain Impairment focusing on Social Cognition (Issue 1, 2017) edited by Professor Skye McDonald. It promises to be a blockbuster!!

Keep an eye out for your e-mail alert for Issue 17.2 if you are a member. If not a member of ASSBI [join here](#).

You should have received login instructions when you joined ASSBI, if you require any help with this please email [Margaret](#)

Jennifer Fleming and Grahame Simpson
Co-Editors

ASSBI RESOURCES

I would like to remind everyone that in addition to the manuals that ASSBI has for sale Members of ASSBI can download many free tests including the Austin Maze.

Non-members also have access to some free downloads too – [click here](#) to see the full list of manuals and free to downloads on offer

Skye McDonald
Resources Manager

PsycBITE™



Learn more about evidence based practice; understand more about scientific evidence underpinning remediation and rehabilitation: Become a rater for PsycBITE

What is PsycBITE?

[PsycBITE](#) is a world-class, living e-resource that archives all published literature on psychological treatments for people with chronic diseases and disorders from acquired brain impairment. Launched in 2004, PsycBITE updates the literature monthly. It currently archives 4,000 empirical papers

STUDENTS CORNER

The past few months have been very busy for ASSBI student teams organising a variety of events. Below are some updates from a few of our ASSBI Team Leaders:

Newcastle Team (Lisa Foote): The Newcastle team hosted a screening of The Crash Reel on August 9th, followed by a panel discussion by a multi-disciplinary team focused on traumatic brain injury. Panel speakers represented a multidisciplinary team, including occupational therapy, psychology, nursing and speech pathology. Over 40 people attended the event, which was a great success!



Photo: Newcastle screening of the Crash Reel

Sydney Team (Isabella Hoi Kei Leung): On June 30th, the Sydney team hosted their first ASSBI event of the year. 38 people attended a trivia night at Bar Cleveland in Sydney, which was a huge success!

Melbourne Team (Sylvia Nguyen): The Melbourne Team hosted a multidisciplinary panel on August 10th, who spoke to a packed room at the Melbourne Brain Centre. The panel was made of members from the Austin Health Stroke Rehab Team who guided students through the rehabilitation process from the perspective of each discipline. The event highlighted the collaborative nature of rehabilitation in an informative and captivating presentation!

You can find out about upcoming events hosted by ASSBI teams in your local area for 2016 via our website, facebook page, and other social media outlets!

For full reports on these events go to the [Student News Page](#)

For any student enquiries email students@assbi.com.au

ASSBI MEMBERSHIPS

ARE NOW ANNIVERSARY
which means that your
membership lasts for a full
12 or 24 months

- ✓ Full member cost
 - ✓ \$150 for 1 year
 - ✓ \$257 for 2 years
 - ✓ Student Cost
 - ✓ \$80 for 1 year
 - ✓ \$144 for 2 years
- (students please email id proof
to admin@assbi.com.au)

Advantages of being an ASSBI member include:

- ✓ Substantial discount
off registration fees for
the 2016 ASSBI
conference in Macau
- ✓ Discounted
registration to all ASSBI
workshops and the
webinar series
- ✓ Access to Brain
Impairment online
- ✓ 4 Newsletters per
annum
- ✓ Access to previously
published papers with
normative data on tests
for children, adults and
older adults.
- ✓ If you refer someone
to ASSBI and they join
you will receive a 10%
discount on any ASSBI run
workshop or webinar

Information on Membership
can be found at
www.assbi.com.au.
Not sure if you are financial?
go to the website to find out.

MEMBERS please go to the
[members page](#) to update your
profile, you can also add a
photo, you are also able to
contact other members via
email.

Margaret Eagers
Executive Officer

ASSBI EVENTS CALENDAR - ASSBI

2016 WEBINAR SERIES

1 hour 12.30-1.30

Cost varies [go here to find out](#)
[Register here](#) For 1 or more

Webinar 5: A/Prof Grahame Simpson - *Suicide
prevention in acquired brain injury*
Date: 11 October 2016

Webinar 6: - A/Prof Olivier Piguet - *Neuroimaging in
the dementias: what's the catch?*
Date: 13 December 2016

AVAILABLE ON DEMAND

Webinar 1: - *Managing challenging behaviours in
community settings* - Ms Sue Sloan

Webinar 2: *Long-term Outcome Following Traumatic
Brain Injury (TBI): Three-factor Cognitive Reserve
Structure*- Prof Eli Vakil

Webinar 3: *Aboriginal Australians' experiences of brain
injury and ways to move forward in providing culturally
secure rehabilitation services* - Prof Beth Armstrong

Webinar 4: *Addiction and the brain: what do we know?*
- Dr Valentina Lorenzetti

2016 – CONFERENCE/ WORKSHOPS

39th Annual Brain Impairment Conference

Date: 26 - 28 September 2016

Venue: Sheraton Grand Hotel, Cotai Strip, Macau, China

Register: <http://www.cvent.com/d/7fq485/4W>

Convenor: Prof David Shum

Capacity Assessment and Guardianship Workshop VIC

Date: 14th October

Register: <http://www.cvent.com/d/wfq06m/4W>

Capacity Assessment and Guardianship Workshop NSW

Date: 21st October

Register: <http://www.cvent.com/d/qfq18r/4W>

Capacity Assessment and Guardianship Workshop WA

Date: 28th October

Register: <http://www.cvent.com/d/mfqw1f/4W>

A clinician's guide to trauma and the brain

Speaker: Jan Ewing

Date: 14th November

Venue: Ether Convention Centre, Melbourne, VIC

Register: <http://www.cvent.com/d/mfq97s/4W>

40th Annual Brain Impairment Conference

Date: 1 – 3 June 2017

Venue: Grand Hyatt, Melbourne, Australia

Convenor: Dr Dana Wong

Information:

http://www.assbi.com.au/conference_2017.html

OUTSIDE EVENTS CALENDAR

2017

International Cognitive-Communication
Disorders Conference (ICCDC)

Date: 19-21 January 2017

Venue: Chapman University, California,
USA

Contact:

<http://www.chapman.edu/ICCDC>

4 day training program – *Whatever it
takes – a training course on
rehabilitation following ABI*

Date: 21-24 February 2017

Venue: Flinders University, City
Campus, Adelaide, SA

Contact: www.abirehab.org

INS Mid-Year Meeting

Date: 5-8 July 2017

Venue: Cape Town, South Africa

Contact: <http://www.the->

[ins.org/future-ins-meetings](http://www.the-)

14th NR-SIG-WFNR Conference

Date: 10-11 July 2017

Venue: Townhouse Hotel, Cape Town,
South Africa

Contact: Margaret Eagers

[http://mers.vpweb.com.au/NR-SIG-
WFNR-Conf.html](http://mers.vpweb.com.au/NR-SIG-WFNR-Conf.html)

Proudly supported by

 SHINE LAWYERS